

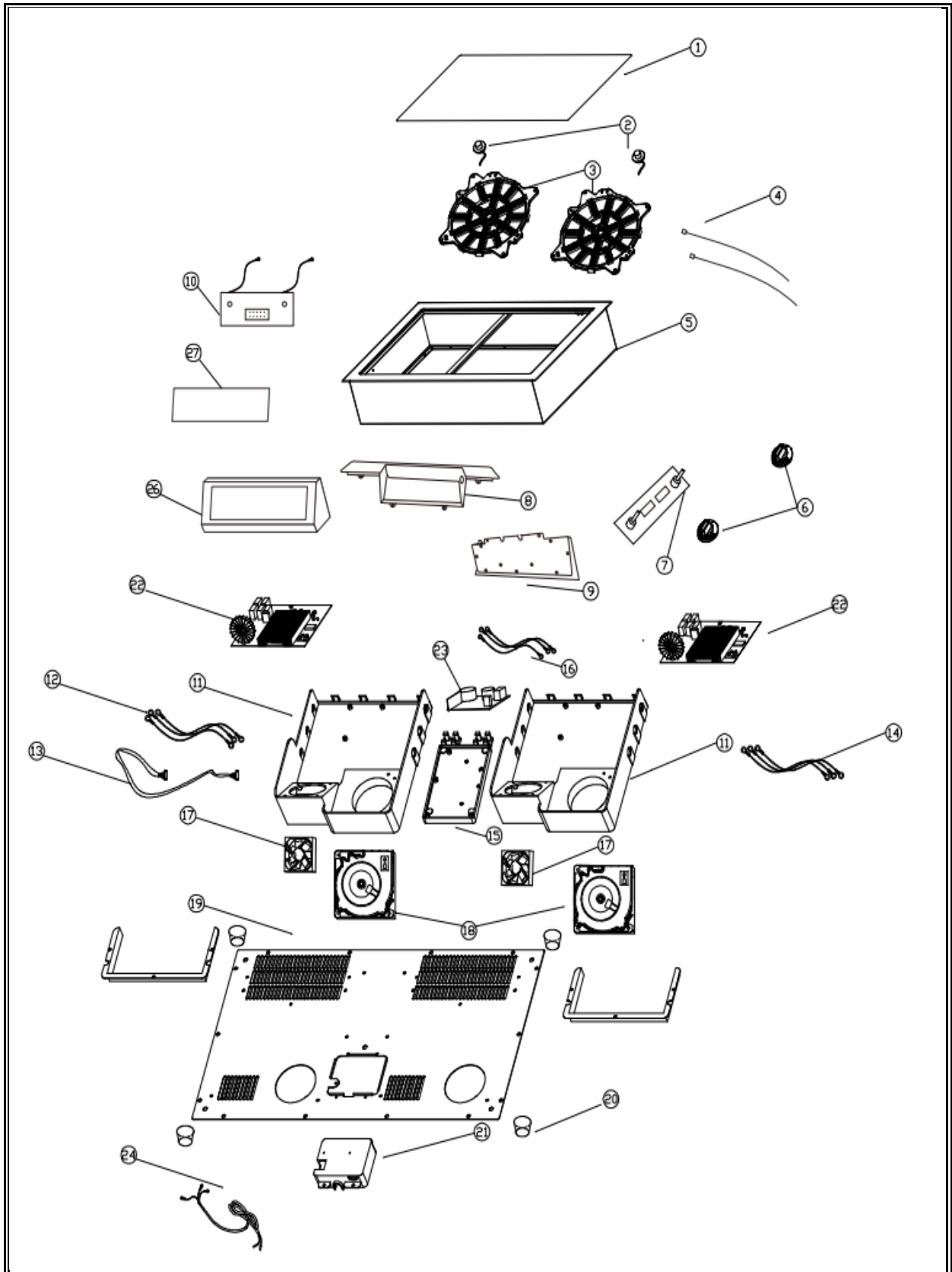


***7505.0020***

Onderdelen informatie  
Erzatzteil information  
Spare part information  
Information de pièces







POS:	Art.No.:	Omschrijving:	Aantal:
1	CS9806.0232	Glasssplate	
2	CS9806.0234	Sensor 7X-A	
3	CS9806.0238	Heating coil	
4	CS9806.0236	Sensor 8A-A	
5		S/S housing	
6	CS9806.0240	Knob	
7	CS9806.0242	Control panel	
8		Black plastic part in control box	
9		Metal bottom plate for control box	
10	CS9806.0244	PCB board for signal Cable	
11		Inner housing	
12		Left mainboard connecting cable	
13		Control box connection cable	
14		Right mainboard connecting cable	
15		Plastic housing for power board	
16		Filter PCB board connecting cable	
17	CS9806.0246	8025 fan	
18		Bulge fan	
19		Bottom plate	
20		Foot	
21		Plug cord box	
22	CS9806.0248	Mainboard	
23		Filter PCB board	
24		Plug cord	
25		Stainless steel control box	
26		Control box glass	