

Client \_\_\_\_\_ Quantity \_\_\_\_\_  
 Project \_\_\_\_\_ Position \_\_\_\_\_

## FUN 600

**Model:** F60/90PCE/T

**Cod:** MP01012121004



### Technical data

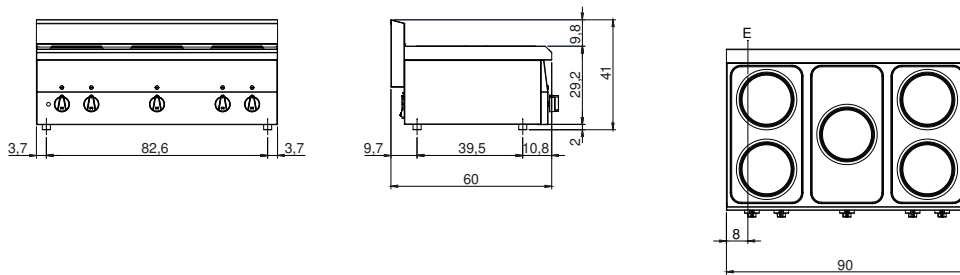
<b>Modularity:</b>	Top
<b>Dimension (mm):</b>	900x600x300
<b>Total electric power (kW):</b>	10
<b>Electric power (V):</b>	380-415
<b>Ampere (A):</b>	18,5
<b>Phases:</b>	3N
<b>Cable section (mmq):</b>	5G2,5
<b>Frequency (Hz):</b>	50-60
<b>Net volume (m3):</b>	0,162
<b>Packing dimensions (mm):</b>	976x695x630
<b>Gross weight (kg):</b>	25
<b>Gross volume (m3):</b>	0,427

### Features

<b>Working top:</b>	Made of AISI 304 stainless steel with a thickness of 8/10 mm
<b>Knobs:</b>	Knobs are made from a sturdy heat-resistant polymer blend
<b>Flue:</b>	Made in a single piece, which facilitates the alignment of the modules

Electric hob with 5 plates Top with deep funnel in AISI 304 stainless steel; covering in AISI 430 stainless steel thickness 8/10; bottoms and internal parts in anti-corrosion material (aluminised sheet metal). Hob with cast iron electric plates  $\varnothing$  180 mm with stainless steel edge sealed to top. Six different temperature adjustments for each plate. Indicator lights to show electrical power supplied and plates in operation. Power: 5 plates x 2 kW ea. Total power 10 kW. Electrical power supply VAC 400+3N 50÷60 Hz.

### Technical draw



E: Electric power